

Vélorail du Cézallier, The rail bike guidebook

Discover the Cantal on one of our rail bikes. Fancy cycling across 30 km of the Cézallier railway line, from Moissac to Lugarde enjoying stunning scenery along the way?

With six different circuits to choose from, ranging from 6-23 km a fun filled family day out is guaranteed, you can even opt for a power assisted rail bike!





JAUDE

CENTRE COMMERCIAL

Les commerçants du Centre Jaude soutiennent le tourisme Auvergnat

TENTEZ DE REMPORTEZ VOS PLACES
SUR NOS RÉSEAUX SOCIAUX :

@centrejaude



Celebrating 25 years of the rail bike : Vélorail du Cézallier 1996 -2021

- Map of circuits p.4
- The beginning of the Railway line p.6
- The Cézallier p.9
- The cascade des Veyrines waterfall Circuit p.10
- The Ribeira Circuit p.11
- The Baron de la Santoire Circuit p.12
- The Gentiane Circuit p.13
- The Pinatelle Circuit p.15
- The Rocher du Cuze Circuit p.16
- 'Estives', Burons & Salers cows p.18
- Gentian, deer & red kite p.19
- Les Amis du Viel Allanche p.20
- Safety rules and regulations p.22

On the 29th of June 1996, the first rail bikes were inaugurated on this railway line. Behind this innovative project aiming to revive the railway station and attract tourists was the former Maire and doctor of Allanche, Christian Léoty. 25 years on, the rail bike is still thriving.

Since April 2018, the 'Vélorail du Cézallier' is run by by the company SARL Vauché ASP managed by three brothers: Arnaud, Sébastien and Pierre Vauché. A local family from Prades, Landeyrat.



La Montagne - Centre France - 2 juin 1996



Le vélo-rail : une nouvelle manière d'offrir les voies ferrées abandonnées.

There are six different circuits are to choose from departing from the stations at Landeyrat and Allanche. The circuits range in distance from 6 – 23 km, return journey. Worried about it being difficult? No sweat! The circuits vary from easy to energetic! You can always opt for a power assisted rail bike! Fancy a drink or an ice cream? No problem! both are possible at the railway station in Allanche or at the café in Landeyrat. We can even provide a picnic hamper with fresh and local produce to eat along the way, just ask!



Map of circuits

Each circuit is unique, taking you through the high plateau of the Cézallier and shaded woodlands.



Chateau de Moissac



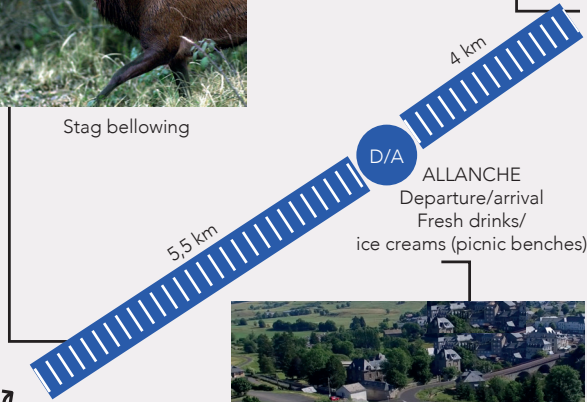
'Estives'
are Summer pastures
(picnic benches)



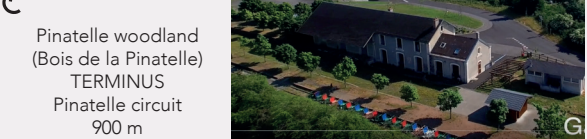
Stag bellowing



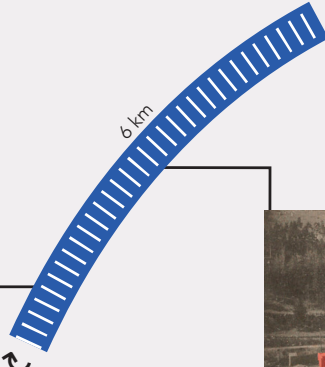
The rocher du Cuze
(picnic benches)



ALLANCHE
Departure/arrival
Fresh drinks/
ice creams (picnic benches)

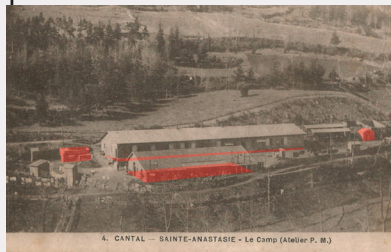


Pinatelle woodland
(Bois de la Pinatelle)
TERMINUS
Pinatelle circuit
900 m
(picnic benches)



Moissac
TERMINUS

The rocher du Cuze circuit

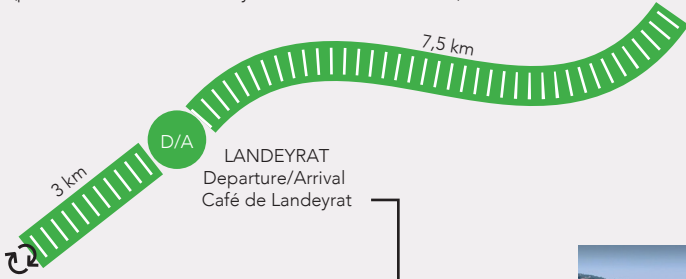
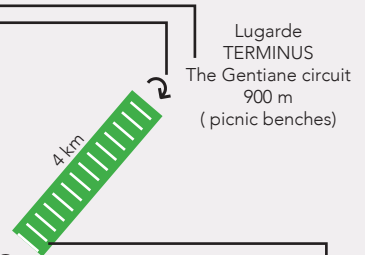
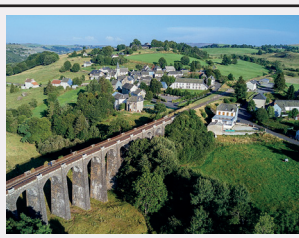


Sainte – Anastasie/ The prisoner of war camp

880 m



Suc du chien
(panoramic view of the Sancy and the Monts du Cantal)



LANDEYRAT
Departure/Arrival
Café de Landeyrat

The Cascade des Veyrines waterfall
TERMINUS
The Cascade des Veyrines circuit
and The Ribiera circuit
1040m



The Viaduct de Saint Saturnin
(picnic benches at the terminus)



Cascade des Veyrines



Basalt columns at Saint Bonnet-de-Condât
(picnic benches)

THE START OF THE RAILWAY LINE

THE NEUSSARGUES – BORT-LES-ORGUES

In 1892 'la Compagnie du Paris-Orléans' was granted permission to develop a line from Neussargues to Bort-les-Orgues. Works began in 1901 and ended in 1908, with the aim to transport wine from the Languedoc to Paris. At the time there was a lot of competition between rail companies.

However, the line's future was not to be of national but of local interest. The 71 km of railway track forming a triangle between Bort-Miécaze-Aurillac and Aurillac – Neussargues was about to be broken. In 1950 the construction of the EDF dam at Bort-les-Orgues, meant that the station at Bort-Eygurande was flooded by the reservoir and closed forever.

The branchline was technically difficult to develop with 30 % gradients, 150 m radius curves, crossing sparsely populated areas. Transporting passengers and goods (such as wood, cheese, fur, gentian, livestock) were maintained up until the beginning of the nineties. The growth in road transport and car ownership contributed to a decline in the rail service.

MAINLY AGRICULTURAL ACTIVITY

Upon leaving Bort, the railway follows the Aurillac line before it forks off towards the east passing through the stations : Antignac-vebret, Saint-Etienne,-Menet, Riom-es-Montagnes, crossing Barajol viaduct over the river Grolle, before reaching Condat-Saint-Amandin, Lugarde Larchastel, Saint-Saturnin -Saint Bonnet and the col de Clavières at an altitude of 1901m. From there the line descends to Landeyrat-Marcenat, Allanche, Sainte-Anastasie and Neussargues.



The train station Landeyrat-Marcenat is somewhat of a novelty. Secluded on the high plateau of the Cézallier at 1085 m altitude, the station was once busy with the bustle of freight trains and the arrival and departure of livestock.

Each year from May until October, thousands of livestock, transported by the wagonful were taken up to graze onto the Artense and the Cézallier summer pastures.

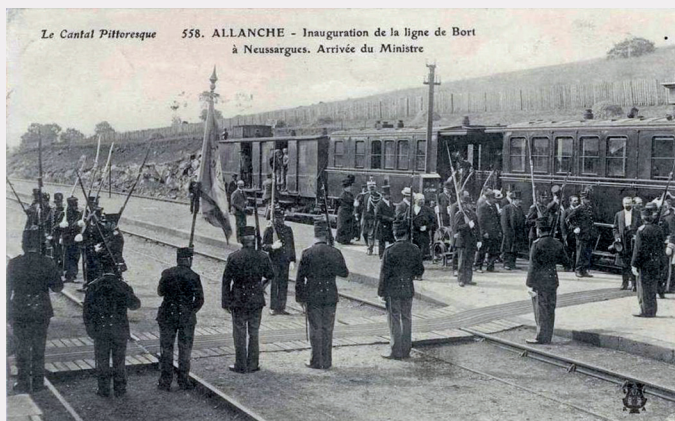


The 26th may 1990 the railway stopped its passenger service and the 31st of august its freight service came to a halt: The closure marked the end of 82 years of service.

Historically, the development of the railway in Allanche led the town to become a very popular market town.

The 2nd December 1907 the 'Compagnie du chemin de fer de Paris à Orléans' inaugurated the station in Allanche and the Allanche to Neussargues branchline. It was a celebration that gathered many people such as the 'sous prefet' and the deputy. A banquet was even served to 62 people at the Tassidre-Martin hotel.

The 11th May 1908, the branch Riom es Montagnes to Allanche opened, which meant the entire line from Bort les Orgues to Neussargues was in service. The 8th of July 1908, an official ceremony was organized at the station in Allanche. People gathered early in the morning to catch a glimpse of the first train passing through. The Minister of planning Louis Barthou, Emile Heurteau the director of the company P.O, and Paul Sejourné, the chief engineer, were all present.



MARCENAT

Foulée

26
ÉME

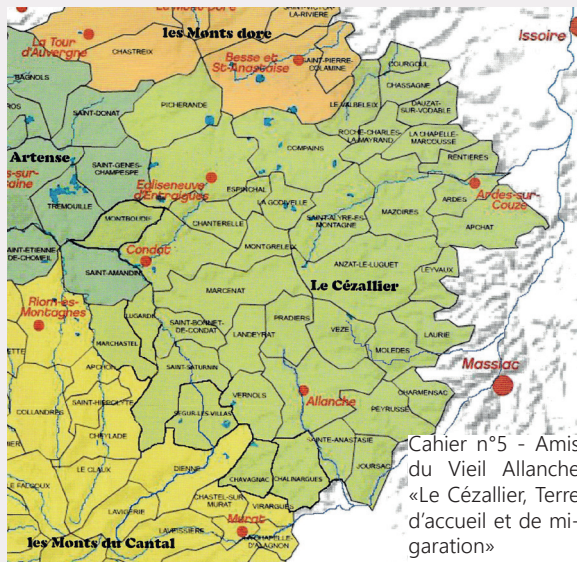
DU CÉZALLIER

Dimanche 15 août 2021

3 TRAILS : 26 KM, 12 KM ET 6 KM

<https://www.fouleeducezallier.com>
fouleeducezallier@gmail.com
Gérard 06.30.14.26.13

The Cézallier



The massif du Cézallier (auvergnat Sejalair in Occitan), is a volcanic plateau located between the Monts Dore and the Monts du Cantal. The plateau stretches over two 'departements' or counties: the Puy-de-Dôme and the Cantal. The Signal du Lugeuet at 1 551m is the highest point.

The Cézallier is made up of many plateaus and small volcanic mountains mainly consisting of basalt rock, rocks formed from the rapid cooling of lava. However a few craters do exist on the plateau, the most recent are only a few thousand years old at 'Montchal', 'Montcineyre' and some even house lakes like 'La Godivelle'.

Cahier n°5 - Amis du Vieil Allanche «Le Cézallier, Terre d'accueil et de migration»

The volcano that contributed to the creation of the Cézallier appeared 8 million years ago and became extinct 3 million years ago. Measuring 25-30 km long and 10 km wide it was orientated north/south, The Signal du Lugeuet is one of the reminders of its existence.



Peat bogs

The damp and chilly climate of the Cézallier as well as the past volcanic activity and glacial erosion are the ideal conditions for the formation of peat bogs. Freezing winters mean that plant growth is slowed and starts again only in the summer season. The evaporation on the surface of the peat bog causes the water in the depths of the bog to cool descending to 0°C on summer nights thus slowing the decomposition process of dead plants. Two peat bogs are still in activity for horticultural use at Landeyrat and Picherande.

Burial mounds

Between 2500- and 1500-years BC, people started to work the plateaus of the Cézallier, farming livestock. Burial mounds can still be seen to this day dating back to that time. According to historians, the deceased were cremated and around the cremation site a stone wall was built. Gifts were left and the entire site was covered over with earth.

THE CASCADE DES VEYRINES WATERFALL CIRCUIT

Departure Landeyrat train station
Suitable for everyone - 6 km return journey
Time: 1h30 with a 45-minute break at the waterfall included.
Departure times: 9h45 -12h -14h15 – 16h15 -18h



This 6km round trip (3km there, 3km back) is open to all levels of fitness. Enjoy the stunning scenery of the summer pastures of the Cézallier!



Along the way look out for the Château de Prades home of Dominique Dufour, known as the Abbé de Pradt, Bishop of Poitiers in 1805, Archbishop of Malines in 1809, Chaplain for Napoleon Bonaparte and ambassador of France in Warsaw in 1812, Lord Chancellor of the Legion of Honour in 1814 and senator to France !

The original chateau was destroyed during the French revolution, however during the 19th century Abbé de Pradt rebuilt it alongside the working farm. Some of the horses from Napoleons army were bred at the farm, including Napoleon's horse 'Cantal'.



Nowadays the Chateau is still a working farm and provides bed and breakfast to passing tourists as well as offering a rustic retreat in a renovated freight wagon.



Photo La Montagne
A la conquête du Cantal en train
Les Amis du Viel Allanche - 1982

As previously stated, the train station at Landeyrat-Marcenat was used for the seasonal migration of livestock onto the summer pastures. It became known as the 'Far West station'. Some years, as many as 10 000 animals in over 400 wagons passed through the station!

Weather conditions can be extreme, as you can see from the photo taken in 1953 of this passenger train snowed in!



THE RIBEIRA CIRCUIT



Departure from the station in Allanche
Reasonable level of fitness required - 8 km
return journey

Time: 2 hours with a 30-minute break at
the waterfall included.

Departure times: 9h30 -11h45 -14h-16h

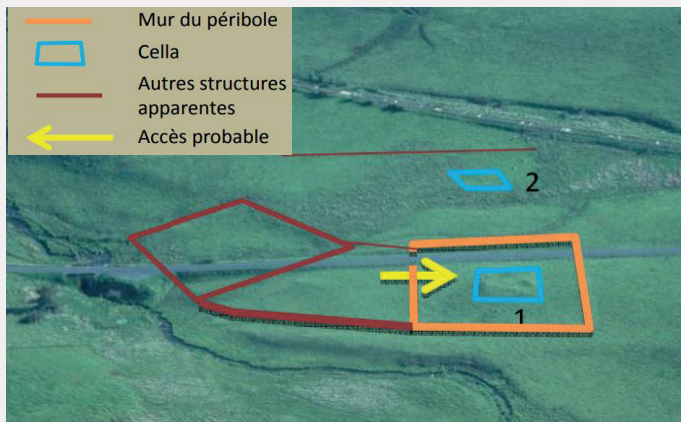
This 8 km round trip (4km there – 4km back) is a bit harder than the first circuit. The cascade des Veyrines. The route starts with a climb up to the waterfall, la cascade des Veyrines. Stunning scenery can be admired along the way, open pastures on one side and the woodland of Roche Grande on the other.

The Veyrines archeological site :

Once on the plateau, archeological remains are relatively easy to spot especially when the sun is low in the sky.

The archeological site at Veyrines was discovered at the beginning of the 20th century during the works on the railway line. Oil lamps, pottery fragments, ceramic fragments were unearthed.

The locality of the site being so close to the waterfall indicates that this roman villa could have been a sanctuary where water was worshipped. The temple, composed of a cella, a temenos (courtyard) and a walled peribole would have housed a statue of a god or a goddess. The location of this temple was close to a busy path, leading over the col.



Potentially a second structure is distinguishable, possibly a cella from a second fanum.

Source :
L'archéologie vue du ciel ; paysage en palimpseste / archives du Cantal

THE BARON DE LA SANTOIRE CIRCUIT`

Departure from the station in Landeyrat
Reasonable level of fitness required - 15 km return journey – Power assistance possible

Time: 3 hours with a 45-minute break at the viaduct.

Departure times: 9h30 – 15h15.



Merci à Patrick Garinot pour la photo



Construction entre 1892 et 1905

- photo donnée par Patrick Garinot

206 meters and 36 meters high, the viaduct spans over 200 meters and has ten arches. Built out of basalt rock quarried from the Cézallier volcano, the viaduct embodies a magnificent curve passing over the Santoire valley.

The viaduct was mainly built by teams of builders from the nearby regions of the Correze and the Creuse. The workers were housed at the northern end of the viaduct in a village that the locals referred to as 'the wooden town'. Lagrange, the engineer's house, the only house built from stone is still standing today.

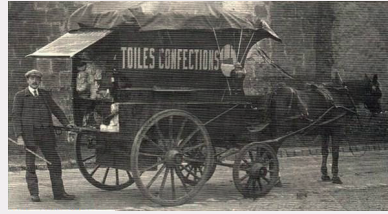


Vallée de la Santoire, vue du col de Cabre

The viaduct passes over the Santoire Valley. This valley was formed during the second glaciation, an important period in the formation of the plateaus of the north Cantal. The valley runs from the col de Cabre between the Puy Bataillouse and the Puy Peyre-Arse and ends in Condat

THE GENTIANE CIRCUIT

Departure from the station in Landeyrat
A good level of fitness required - 23 km return journey – Power assistance possible
Time: 5 hours with a 1h15-minute break at Lugarde and along the way.
Departure times: 9h15 – 15h.



Marchand de toile en 1920

The foothills of the Limon plateau provide a spectacular view over the Santoire Valley and the village of Saint-Bonnet de Condat with its basalt columns. This village of 300 inhabitants was once famous for its textile merchants: selling linen.

During the 19th and 20th century, itinerant salesmen would travel all over France. They bought their textile in the north of France and transported it via railway or horse and cart and sold it on to the locals. The height of their business was at the beginning of the 20th century when 2000 salesmen were in business across France.



The picturesque village of Lugarde, situated at 1020 meters on the limon plateau dates back to the celts. A temple built for the god Lug gave Lugarde its name.

The church dates back to the 12th & 13 th century. The first known lords were the Bréon in 1229. The Murats followed in 1288, the Estaing in 1445 and the Chavagnac in 1647 the latter had their possessions confiscated during the French revolution on the village square.

The Suc du Chien – 1027 m (Lugarde)

Past Lugarde Haut, at the highest point, a spectacular panoramic view of the Monts du Cantal, the Plomb du Cantal (1855m), the Puy Mary (1783m, the Rhue and the Santoire gorges, the Cézallier plateau and the Mont Dore (Puy Sancy 1886) awaits you.

A 'suc' is a small mountain shaped like a cone or a dome, it gets its peculiar shape from volcanic activity.

Patrimoine - Gastronomie - Nature - Terroir - Hébergements - Activités - Visites - Randonnée - Culture - Espaces Naturels Sensibles - Petite Cité de Caractère - Restauration - Sport - Artisanat

Hautes Terres tourisme

L'autre terre de volcan

Allanche - Massiac - Murat

3 points d'accueil permanents pour
s'émerveiller en toutes saisons

Notre équipe de passionnés vous attend
pour construire avec vous des vacances
selon vos envies et vous guider dans vos
choix d'activités,
alors n'hésitez plus, venez nous rencontrer !



Hautes Terres Tourisme
04 71 20 09 47
contact@hautesterrestourisme.fr

THE PINATELLE CIRCUIT

Departure Allanche station

A reasonable level of fitness required.

11 km return journey – Power assistance possible

Time: 2 hours with a 30-minute break in the Pinatelle woods.

Departure times: 9h45-15h15



Between the villages of Chalinargues, Allanche, Fortuniès and Chavagnac, lies a beautiful range of pine forest called the massif de la Pinatelle.

The name 'La Pinatelle' originates from scots pine, the variety of pine planted in the forest.

With its gentle and diverse landscape, La Pinatelle is definitely worth a visit! At 1000 meters altitude, take the time to admire the forest, the lakes, lac du Pêcheur, lac Sauvage and the Jolan peat bog Jolan.



Red deer, *Cervus elaphus*, were introduced in these parts in the 1960's and have thrived in the Pinatelle woodland ever since. It has been estimated that there are approximately 100 stags for 300 doe.

From mid-September to mid-October in the countryside round Allanche and especially in La Pinatelle the stags can be heard bellowing. It's the start of the mating season.

During the mating season, the eldest stags bellow whilst watching over their herd, which numbers around 30 deer. The stag bellows in an attempt to attract more females into the herd. This period can be particularly difficult for the older stags as they become tired from fighting the younger rival stag, mating, and watching over the herd. The stags tend to lose 20 % of their body weight during this time and they need to be vigilant as the does are only fertile for 48 hours!

THE ROCHER DU CUZE CIRCUIT

Departure Station in Allanche

A reasonable level of fitness required. 23 km return journey -

Power assistance possible

Time: 6 hours with a 1h30-minute break at Moissac and during the circuit.

Departure times: 9h45

The impressive basalt rock, le Rocher du Cuze stands between Sainte-Anastasie and Moissac. In 1917, during the First World War, due to high demands the Le Rocher du Cuze was quarried. It was at this time that the correctional institution decided to give the go ahead to secretly build a prisoner of war camp called "Atelier special 60" or "Atelier P.M" (PM stands for Military Prisoners).

The prisoners laboured on site at the quarry. It's interesting to note that the trainline running alongside the the Rocher du Cuze also carried German prisoners that were being held at the chateau de Saint-Angeau near Riom-es-Montagnes.



Photo: La grotte du Cuze at the top of the rock.



Photo: During the Mesolithic period (4500 BC), the cave was occupied by hunters from Aquitaine during the summer months.

The village of Moissac, 2 km after the bridge is named after a priory in the region of the Tarn and Garonne. The abbaye of Moissac gave the land in 804 hence the name of the village.



The château de Moissac was built by the lord of Auzolles at the end of the 16th century.



Saint Hilaire church dates to the 12th century, the inside of the church has been listed since 1926 as a historical monument.



Merovingian sarcophagus (to see them, walk to the entrance of the village taking the direction Neussargues.)

AOP SAINT-NECTAIRE



Le fromage rond, tendre et généreux

C'est au cœur du Parc des Volcans d'Auvergne, sur un petit territoire de 69 communes de montagne, entre Puy-de-Dôme et Cantal, que se fabrique depuis plusieurs siècles l'AOP Saint-Nectaire. Fromage au lait des vaches alimentées à l'herbe des prairies naturelles du Sancy et du Cézallier, sa forme ronde, sa croûte fleurie, sa pâte onctueuse et ses saveurs subtiles régaleront les gourmands. Laitier au lait pasteurisé, ou fermier au lait cru, le Saint-Nectaire est un fromage de partage, qui s'apprécie entre amis ou en famille, à l'apéritif, ou sur le plateau de fromages. C'est le fromage convivial par excellence !

 www.aop-saintnectaire.com 



LES ESTIVES

'Les estives' are the summer pastures on the high plateaus. The cattle are taken to the summer pastures to graze from May until October.



The summer season is when the grass starts to regrow at high altitude.



LES BURONS

A buron is built of stone with a slate or lauze roof. They are built on the summer pastures. The farmers used the buildings during 'les estives' when the livestock were on the high plateaus for the summer. The buron was the place where the cheese was made and the buronniers slept.



THE SALERS COW

The Salers cow is a rustic cow, originating from the Cantal. The Salers cow most likely descended from cows imported from the Iberian Peninsula during antiquity. In 1908 the herd book for the salers breed was written, allowing to pinpoint the characteristics of the breed. Initially the breed was used for making cheese and as draft animals.

The Salers cow is mainly bred for its meat. Farms that still milk the breed are increasingly rare because of the unusual milking process. The cow can only be milked with the calf next to it.

GENTIAN

Yellow Gentian (*Gentiana lutea*) still called tall Gentian, comes from the Gentianaceae family. Originating from Europe and Asia, you will often find it in mountainous ranges such as the Cantal.

This tall robust plant can live up to 50 years and takes 10 years to flower for the first time.

Gentian is commonly used to make a liquor which is drunk as an aperitif. The root is dug up with a tool called 'the devils fork'.



DEER

Deer were reintroduced into the Cantal in the 1960's. Elder stags tend to shed their antlers at the end of winter and the younger stags in the spring. Antlers grow back during the summer. The number of points does not indicate the age of the animal. Points are a pure genetical factor.



Males and females live apart most of the year. The stag bellowing marks the beginning of the mating season in mid-September, the aim of the game is to seduce the females. The bigger the antlers and the louder the voice the better!

RED KITE : MILVUS

There are many birds of prey in the Cézallier, but if we had to talk about one it would be the red kite!

Red kites are relatively big birds of prey. They measure between 60-70 cm long, have a wingspan between 145-170 cm and can weigh between 800 -1 600 g.



How to spot them in the air? Look out for long thin wings, light marks under the wings and their V shaped tail.

LES AMIS DU VIEL ALLANCHE

THE HISTORY BEHIND THE PEOPLE AND THEIR LAND.

Les Amis du Viel Allanche is an association of people who are passionate about the history of the plateau du Cézallier, the ancient occupations, the dwellings and past inhabitants.

For over 40 years the association has studied, researched, published and supported various actions to protect the area's heritage.

The association has published over twenty-five studies of life in Allanche and its environs dating back to antiquity right up until the present day.

Life on the Cézallier was mainly based around agriculture, however during the 20th century many men gave their lives on the battlefields.



©Philippe Glaize
Transhumance en gare de Landeyrat en 1990

The association has created its own magazine. It is published once a year and it includes works from historians, specialists, medievalists, geologists, archeologists, and photographers...The articles cover many subjects including renowned figures like the Abbé de Pradt, the chancellor Michael de l'Hospital, the French president Georges Pompidou, the French singer Boby Lapointe, Jean Dutour, Jean Paul Belmondo the actor, the writer Marie-Hélène Lafon and brother François Cassingena-Trevedy author of the hymn de 'l'infinistère. All these people have a strong link to the Cézallier and its surroundings.



©Philippe Glaize



©Philippe Glaize

The association Les Amis du Viel Allanche, give an insight into what life would have been like over the past 5000 years in the Cézallier, the land between the Monts du Sancy and the Monts du Cantal.



Gare d'Allanche - Foire du 7 sept. 1967 - ©Philippe Glaize

At the beginning of the 20th century, the 'Compagnie de Chemin de Fer de Paris à Orléans' (P.O.) built the branchline from Bort to Neussargues that went across the Cézallier. This made the region more accessible to Paris and the Mediterranean making it easier to trade cheese and meat. As a result of this Allanche developed as a market town.

The Vélorail du Cézallier, stops at the stations Landeyrat and Allanche, these stations were renowned for being the largest transhumance stations in France for more than eighty years. Peddling along, you will see some spectacular scenery and find out about some interesting facts. Two main archeological sites are a must see during your visit! The prehistoric cave 'Le Rocher de Cuze' and the remains of the roman temple near the waterfall, la cascade des Veyrines.



Visite nocturne d'Allanche
©Bastien Bechon

Thanks to the magazine and the work of the association Les Amis du Viel Allanche, we have a deeper understanding of the area. From archeology in the Cézallier to the origin of the Salers cow and the famous transhumance etc.. Why not take their advice and find time to stroll through Allanche? You can even ask for a guided tour at the tourist office in this medieval market town!

Find out more about Les amis du Viel Allanche via their website or face book page: www.lesamisduvielallanche.fr . You can purchase the books at the newsagents in Allanche and in bookshops throughout the Cantal or directly at the association Les Amis du Viel Allanche 7 rue des Remparts 15160 Allanche.

Health and safety regulations



You're here to have a great time.
Please ensure you respect the rules
in place for everyone's safety.

1 A rail bike can carry 4 adults or 2 adults and 3 children less than 10 years of age.

2 It is forbidden to bump into another rail bike, tie them together or turn around before you get to the terminus. A break is included in the times given for each circuit to allow you to picnic, have a stroll etc...

3 Going downhill can be steep and dangerous. Break every 20 meters intermittently. In certain cases, a blind bend for example or wet tracks, break every 10 meters. You must be always in control of your rail bike.

4 Rail bikes do not have right of way.
Some level crossings are signaled by a crossbar 150 meters before the crossing. When you reach this zone, you must start breaking in order to stop completely at the STOP sign.

4 Some level crossings are deemed dangerous and are equipped with a red security mat.
You must get off the rail bike and push the rail bike over the crossing manually making sure there are no cars on the road.

5 To immobilize the rail bikes on the tracks, use the hand break located on the back at the left-hand side.

6 You give permission for us to any photo or video that may be taken or shot during your time on the Vélorail du Cézallier for promotional.

7 Its formally forbidden to park on the works of art.

8 in case of a thunderstorm, for your safety, leave the rail bike on the tracks and distance yourself from them. Avoid finding shelter under a tree.




- 9** Please respect departure times, so as not to delay other visitors.
- 10** You and your children's safety is important.
Always keep your children under supervision.
- 11** Failure to comply to the safety rules are the sole responsibility of the people hiring the rail bike. In no way can the management of the rail bike, Hautes Terres Communauté or the SNCF be held responsible.
We do not take responsibility in case of theft.
- 12** Babies under 6 months are not allowed on the rail bike.
- 13** Some circuits have steep slopes. We do not advise for people that have problems cycling.
- 14** Most dogs are forbidden on the rail bikes. A free doggy day care service is provided at each station. Only guide dogs and small dogs (that fit into a basket) are allowed on the rail bikes and must be always under the supervision of their owners.
- 15** In the event of a problem, and to locate your position, the circuits are equipped with kilometer markers and hectometric plaques on the cross rails.
- 16** Power assistance should only be used to help climb hills. It should not be used during the whole circuit.

Advice: Peddling uphill can be hard work. If you have cardio vascular problems we advise you take it easy!

Departure times must be respected. If you arrive late, you maybe refused access. For this reason, we ask you to arrive **30 minutes before departure time**.

Departures are weather dependent; we reserve the right to cancel any departure in case of exceptional circumstances. Make sure you are equipped accordingly (water, sunscreen, shoes etc)

**In the event of an accident, call management
06 38 16 59 96
or call 112 or 18
for accident and emergency services.**



L'AUVERGNE EN ERUPTION

*L'expression du
terroir volcanique*

TERRE & LAVES

CÔTES D'AUVERGNE
APPELLATION D'ORIGINE CONTRÔLÉE

Desprat  Saint Verny
Depuis 1885 Vignoble

VOTRE EXPERT VINS ET SPIRITUEUX

2 magasins pour vous servir :

10 av. J-B. Veyre - AURILLAC 9 rue des chazots - AUBIERE

☎ 04.71.48.58.44

☎ 04.73.19.47.69

MAGASIN PRODUCTEUR

Au coeur des vins d'Auvergne
2 route d'issoire - Veyre-Monton

☎ 04.73.69.92.87

www.despratsaintverny.fr